

Certificate of Analysis

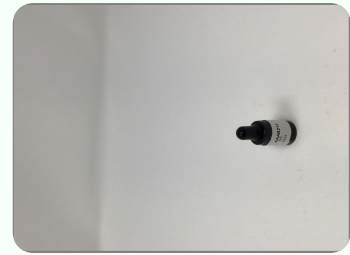
Order #: NE 200113-060142 Order Date: 2020-01-13 Collection Date: 1970-01-01 Report Date: 2020-01-16

Batch #: 9944
Sample #: AAAB214
Specimen Type: CBD/HEMP Derivative Products
Extracted From: Co2
Description: MM5 Cherry

Initial Gross Weight: 7276mg
Method: SOP-3



Potency
Tested



The photos on this report are of a sample collected by the lab and may vary from the final packaging.

CBD Total 3.439%	THC Total 0.100%	CBG Total 0.064%
CBN Total 0.020%	Other Cannabinoids 0.104%	Total Cannabinoids 3.727%

Potency - 11 (Tested)

(HPLC)

Analyte	Result (mg/ml)	(%)	LOQ (%)	Analyte	Result (mg/ml)	(%)	LOQ (%)	Analyte	Result (mg/ml)	(%)	LOQ (%)
CBC	1.039	0.104	0.001	CBD	25.420	2.542	0.001	CBDA	10.230	1.023	0.001
CBDV	<LOQ	0.001		CBG	0.439	0.044	0.001	CBGA	0.234	0.023	0.001
CBN	0.196	0.020	0.001	Delta-8-THC	<LOQ	0.001		Delta-9-THC	0.995	0.100	0.001
THCA-A	<LOQ	0.001		THCV	<LOQ	0.001		Total CBD	34.392	3.439	0.001
Total THC	0.995	0.100	0.001								

*Total CBD = CBD + (CBD-A * 0.877), *Total THC = THCA-A * 0.877 + Delta 9 THC, *CBG Total = (CBGA * 0.877) + CBG, *CBN Total = (CBNA * 0.877) + CBN, *Other Cannabinoids Total = CBC + CBDV + THCV + THCV-A, *Total Detected Cannabinoids = CBD Total + CBG Total + CBN Total + THC Total + CBC + CBDV + THCV + THCV-A (mg/ml) = Milligram per Liter, , LOQ = Limit of Quantitation

Xueli Gao
Ph.D., DABT

Lab Toxicologist

Aixia Sun
D.H.Sc., M.Sc., B.Sc., MT (AAB)

Principal Scientist

This report shall not be reproduced, without written approval, from ACS Laboratory. The results of this report relate only to the material or product analyzed. Test results are confidential unless explicitly waived otherwise. Accredited by a third-party accrediting body as a competent testing laboratory pursuant to ISO/IEC 17025 of the International Organization for Standardization.

721 Cortaro Drive
Sun City Center, FL - 33573

P: +1 (866) 762-8379
F: +1 (813) 634-4538

E: info@acslabcannabis.com
http://www.acslabcannabis.com

License No. 800025015
CLIA No. 10D1094068